



Sharing an Application Instance

Tafonic Quick Start Guide

Introduction

- The Tafonic platform offers a safe and convenient workflow for sharing your application instances with other members of your tenant.
- The same workflow applies to all application instances, irrespective of the actual applications the instances are based on.
- You have complete freedom to decide who can use your instances, in what manner and for how long.
- This document describes the sharing workflow and explains how to associate secondary interfaces with an application instance and assign those interfaces to other members.

Application Instance Sharing

The application instance sharing workflow comprises of the following steps:

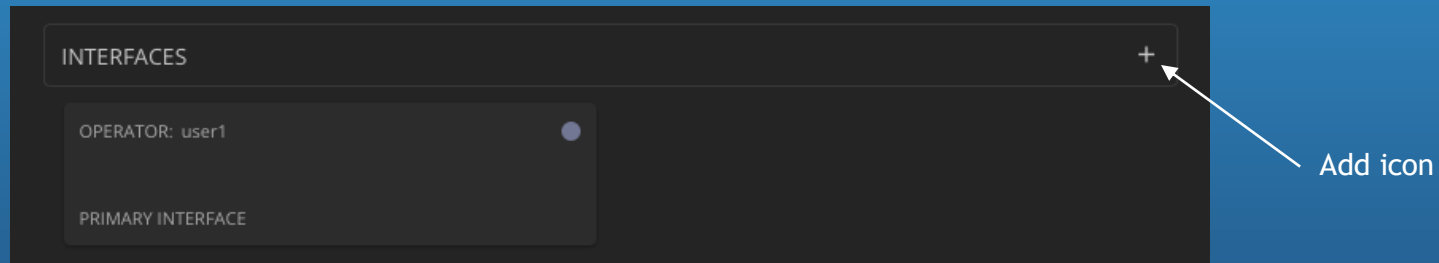
1. Create Interface
 - Associate a new secondary interface with the application instance.
2. Assign Interface
 - Assign the interface to the member you want to share the application instance with.
3. Reclaim Interface
 - Reclaim the interface (from the current assignee) to terminate a sharing session.
4. Delete Interface
 - Remove the interface when you no longer need it.

You may share an application instance with more than one member. However, the total number of interfaces (primary and secondary) that may be associated with an application instance at any given time cannot exceed the **Interface Limit** specified by the application developer.

Creating an Interface

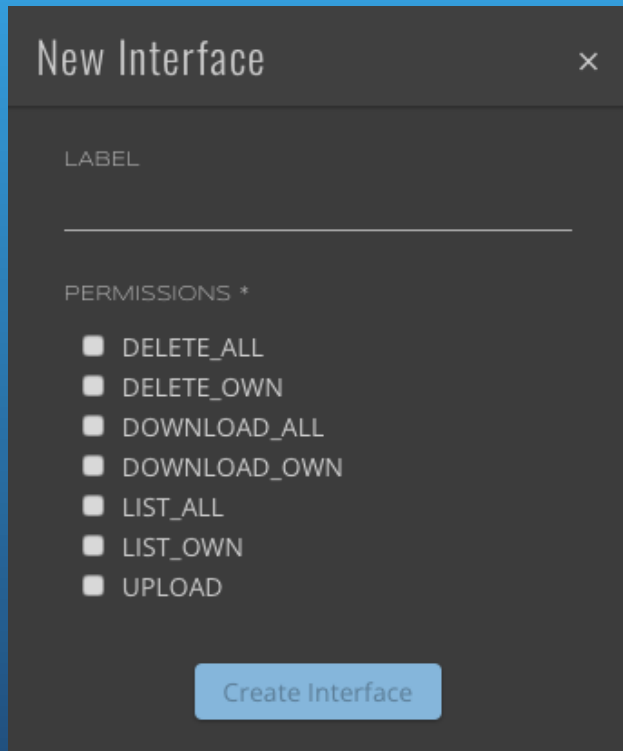
To associate a new secondary interface with an application instance:

1. Click the **App Instances** link in the main menu to go to the App Instances page.
2. Find the application instance you want to associate a new interface with and click that application instance's card to go to the application instance detail page.



3. Click the **add** icon on the interfaces list header to open the form for creating a new interface.

Creating an Interface



New Interface ×

LABEL

PERMISSIONS *

- DELETE_ALL
- DELETE_OWN
- DOWNLOAD_ALL
- DOWNLOAD_OWN
- LIST_ALL
- LIST_OWN
- UPLOAD

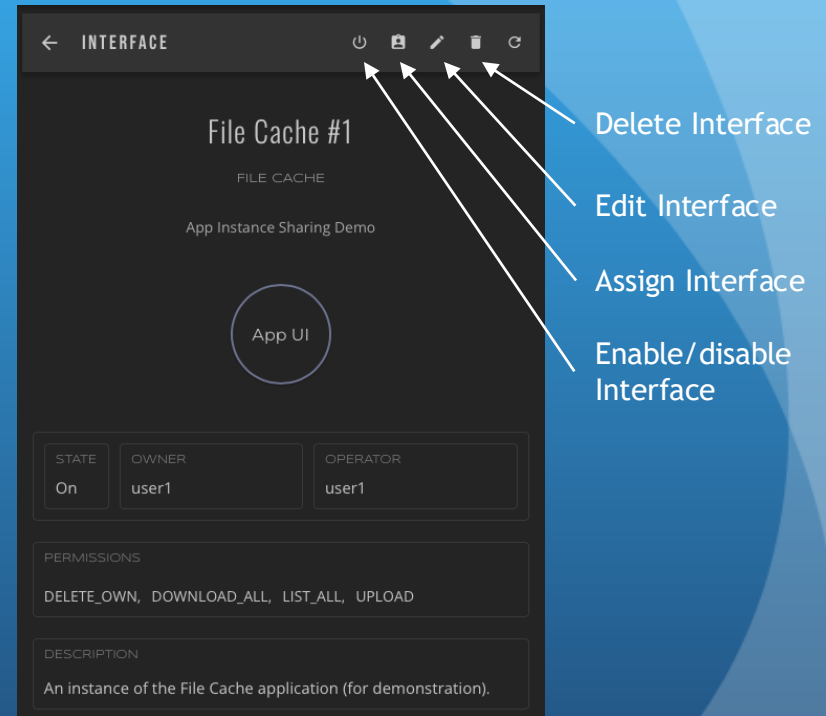
Create Interface

4. Enter a label for the interface (optional).
 - The label can only be seen by the owner of the interface.
5. Select permissions for the interface (required).
 - The permissions will determine the type and scope of the operations that the operator of this interface is allowed to perform on the application instance.
6. Click **Create Interface**.

Interface Details

To lookup the details of a secondary interface associated with one of your application instances:

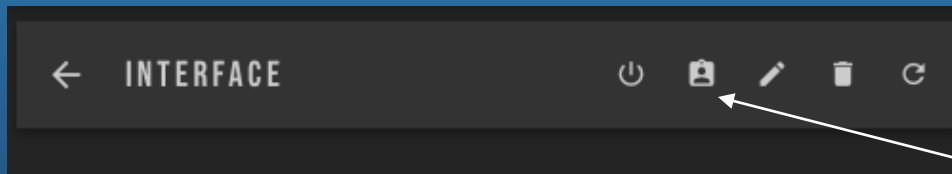
1. Click the **App Instances** link in the main menu to go to the App Instances page.
2. Find the application instance whose interface you are interested in and click that application instance's card to go to the application instance detail page.
3. Find the interface you are interested in (in the application instance's interface list) and click that interface's card to go to the interface detail page.



Assigning an Interface

To assign a secondary interface associated with an application instance to another member:

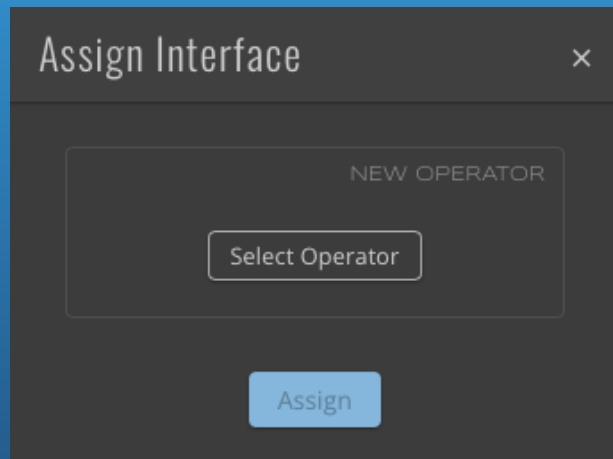
1. Click the **App Instances** link in the main menu to go to the App Instances page.
2. Find the application instance whose interface you want to assign and click that application instance's card to go to the application instance detail page.
3. Find the interface you want to assign (in the application instance's interface list) and click that interface's card to go to the interface detail page.
 - The interface must not be assigned to another member in order to proceed to the next step.



Assign icon

4. Click the **assign** icon on the page header to open the form for assigning an interface.

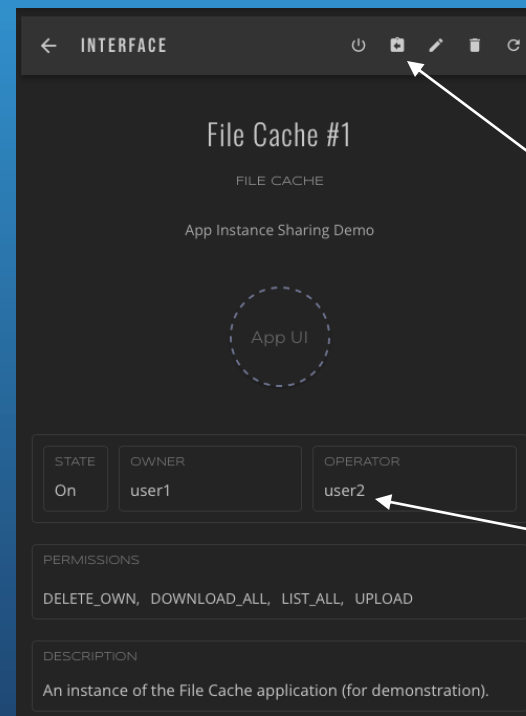
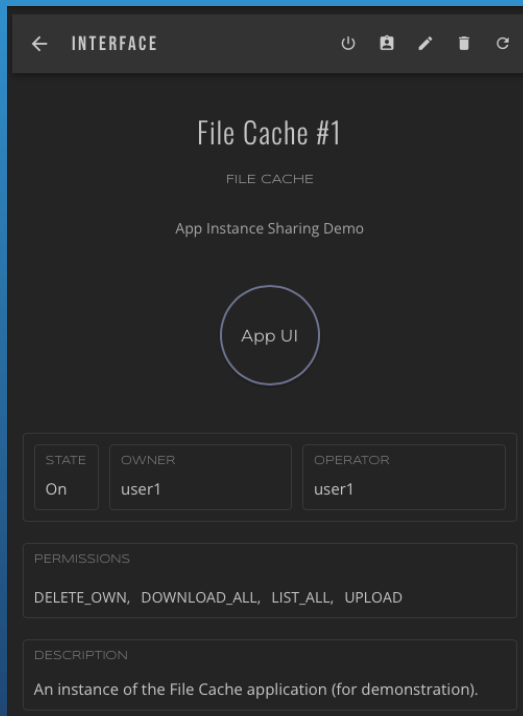
Assigning an Interface



5. Click **Select Operator** to go to the Members page.
 - Find the member you want to assign the interface to and click that member's card to select it.
 - Click **Select Member** to confirm the selection and return to the form for assigning an interface.
6. Click **Assign**.

Assigning an Interface

After the assignment process completes, the member you had selected will be the operator of the interface.



Click here to reclaim interface.

New operator

Copyright 2025 Tafonic LLC. All rights reserved.

www.tafonic.com